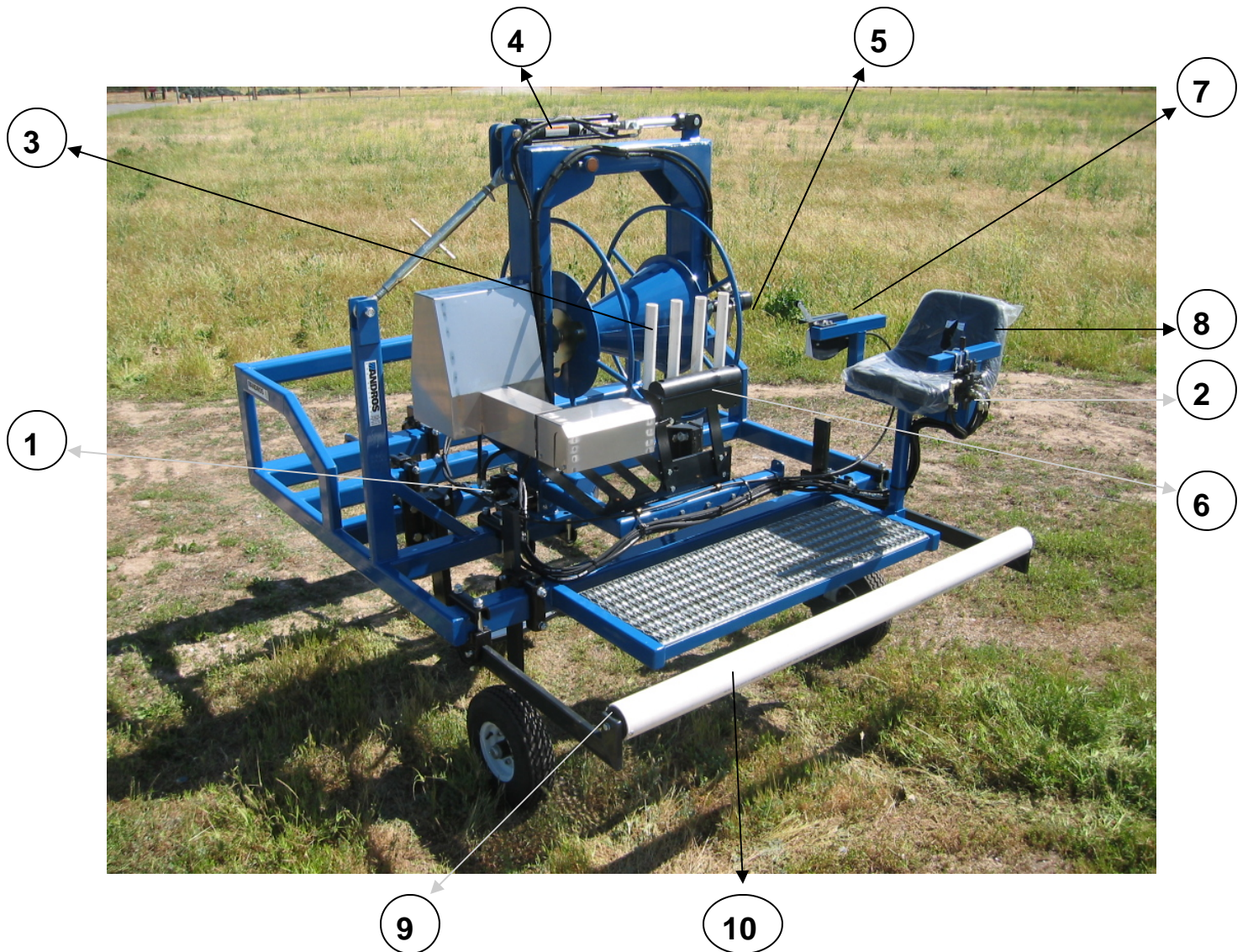


# Digger Parts Manual



## Replacement Parts

## # Required

## Part #

1. Motor Control	1	8000-00001
2. Dump Valve	1	8000-00002
3. PVC Finger	4	TS04-108C
4. Dump Ram	1	8000-00003
5. Drive Motor	2	8000-00004
6. Tape Slide	1	TS04-108D
7. Speed Controller	1	8000-00005
8. Seat	1	950-0082
9. 4" PVC Roller End	2	DE06-204F
10. 4" PVC Roller	1	DE06-204D

## Options:

Coulter Wheel 20" Straight

Part # 950-0054



Coulter Wheel 20" Wave

Part # 950-0079



Tape Lifter Moldboard with Hardware

Part # TU01-102



Tungsten Root Knife with Hardware

Part # TU01-103



Undercutters arms

Standard 8" - 10" Tape Depth  
with hardware

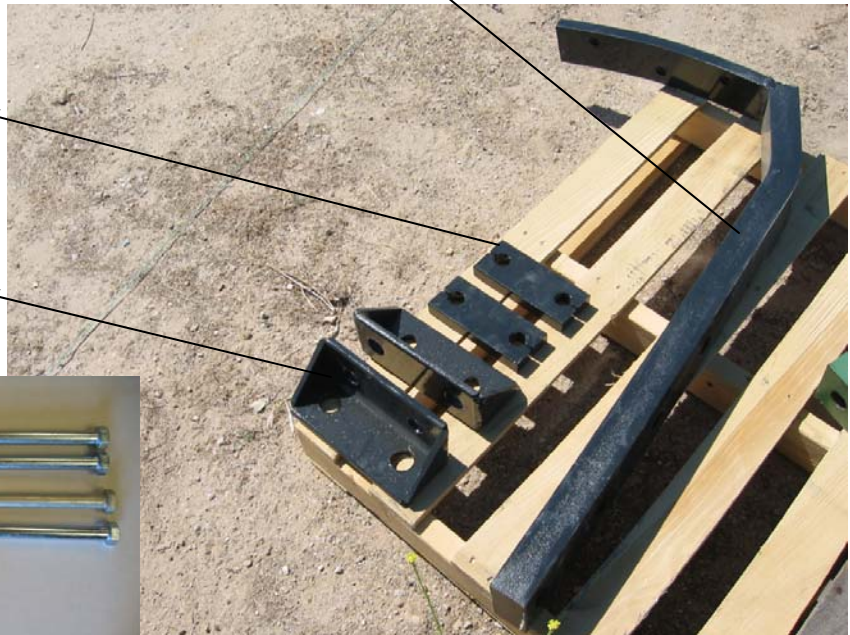
Part # TU01-112L (left)  
Part # TU01-112R (right)

Deep Heavy Duty up to 14"  
with hardware

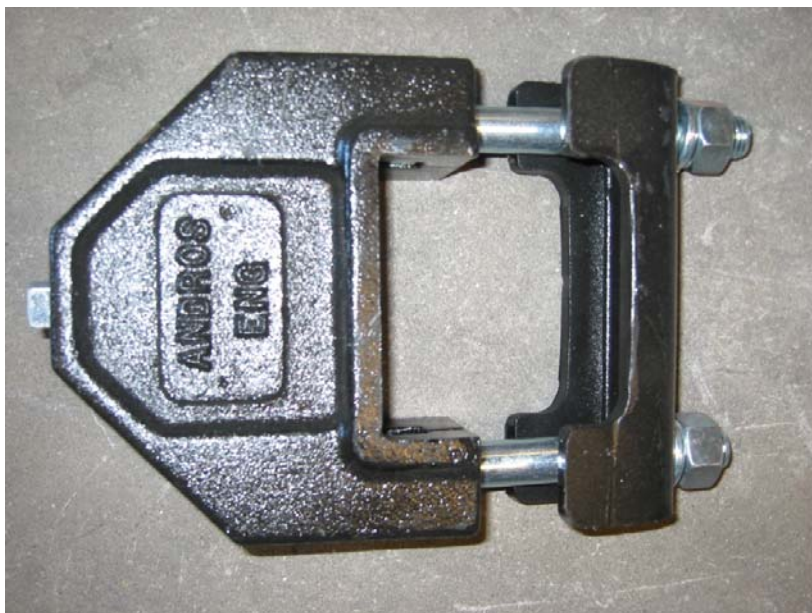
Part # TU01-100LXL (left)  
Part # TU01-100RXL (right)

Angle Bracket Cap  
Part # TU01-451

Angle Bracket  
Part # TU01-450



Andros 4040 Cast Clamp with 1 x 3 pocket Part # 950-C4040



Sweep Shovel with Standard

Part # 950-0078

Drop Forge Standard  
Part # 950-0077



High Wing Furrower  
Part # 950-0076

5.70 Replacement Gauge Wheel (tire wheel combo)  
1 x 3 ~36" staggered standard with hub and spindle

Part # GW0601-202  
Part # GW0601-102



Andros Umbrella

Part # 950-0081



Umbrella Bracket with hardware

Part # 950-0080

